



Installation instructions

We recommend that you close all other applications before installing the Mimics Enlight Structural Heart planner.

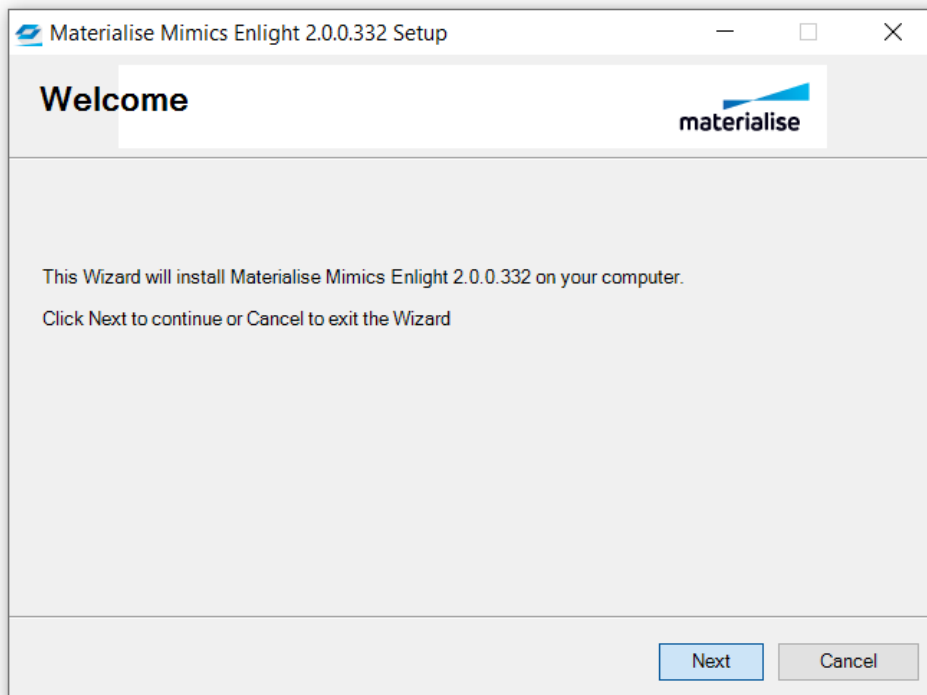
You must have administrative access to install the software. You might need to consult your IT department to grant you administrative access or help you with the software installation.

Download the software installer and launch the installer by double-clicking the .exe file.

Software installer

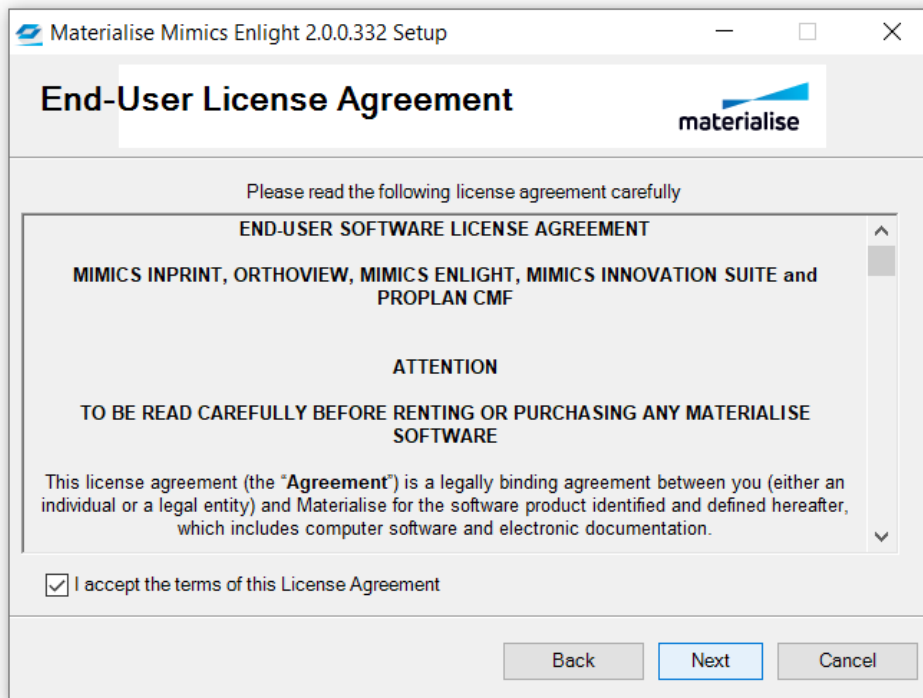
Follow the Wizard to complete the installation.

Click *Next*.

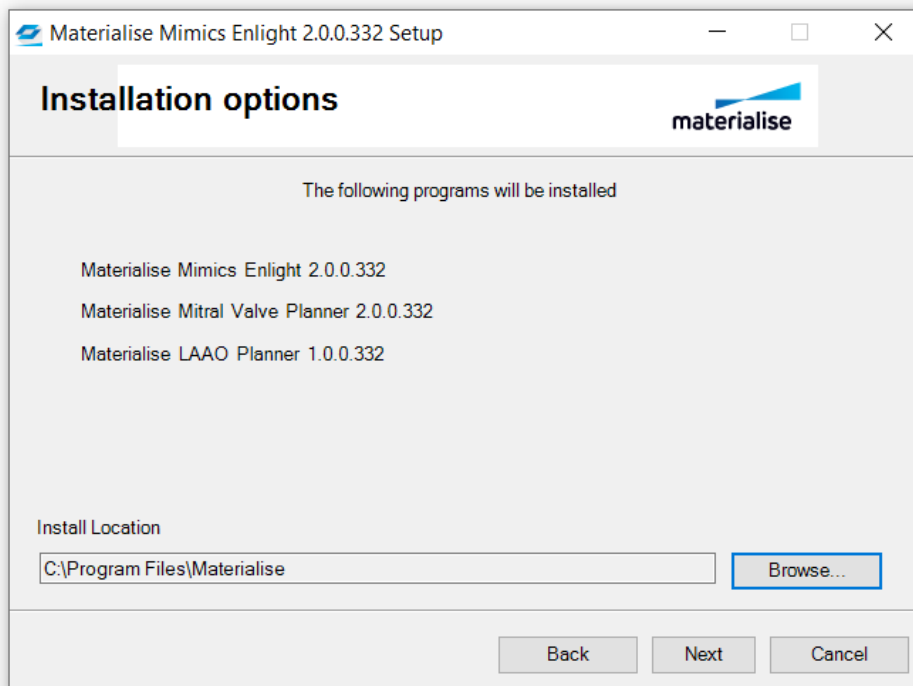




Select *I accept the terms of this License Agreement* (click Next).

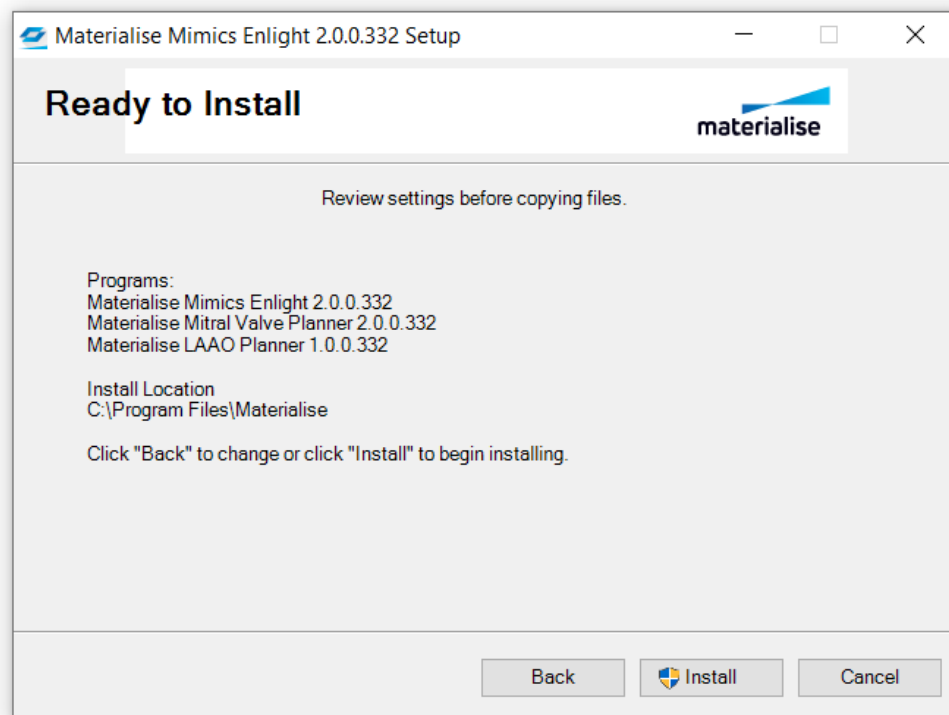


Click *Next*.

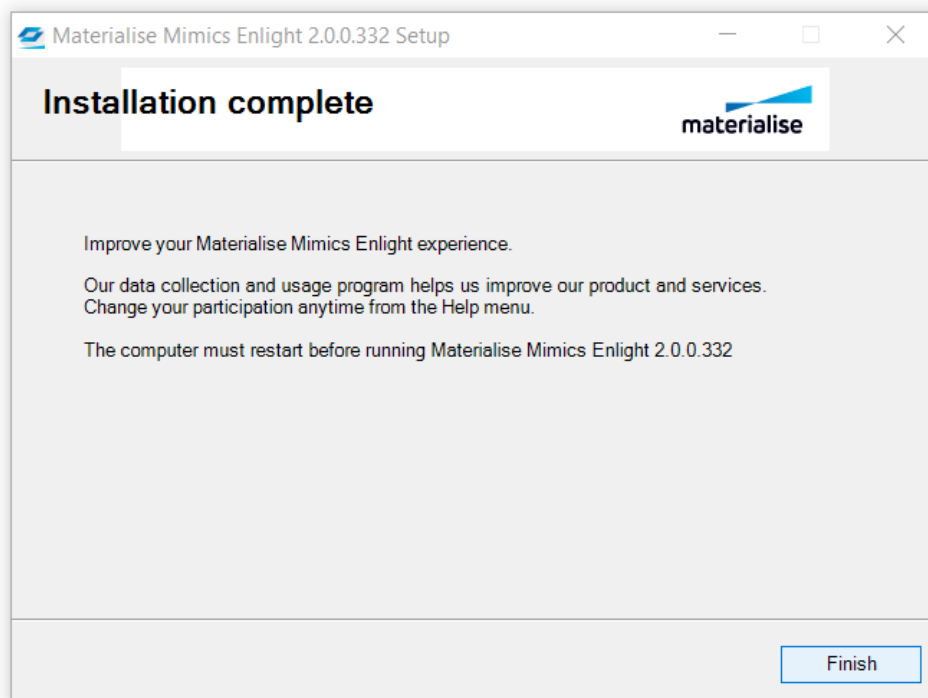




Click *Install*.

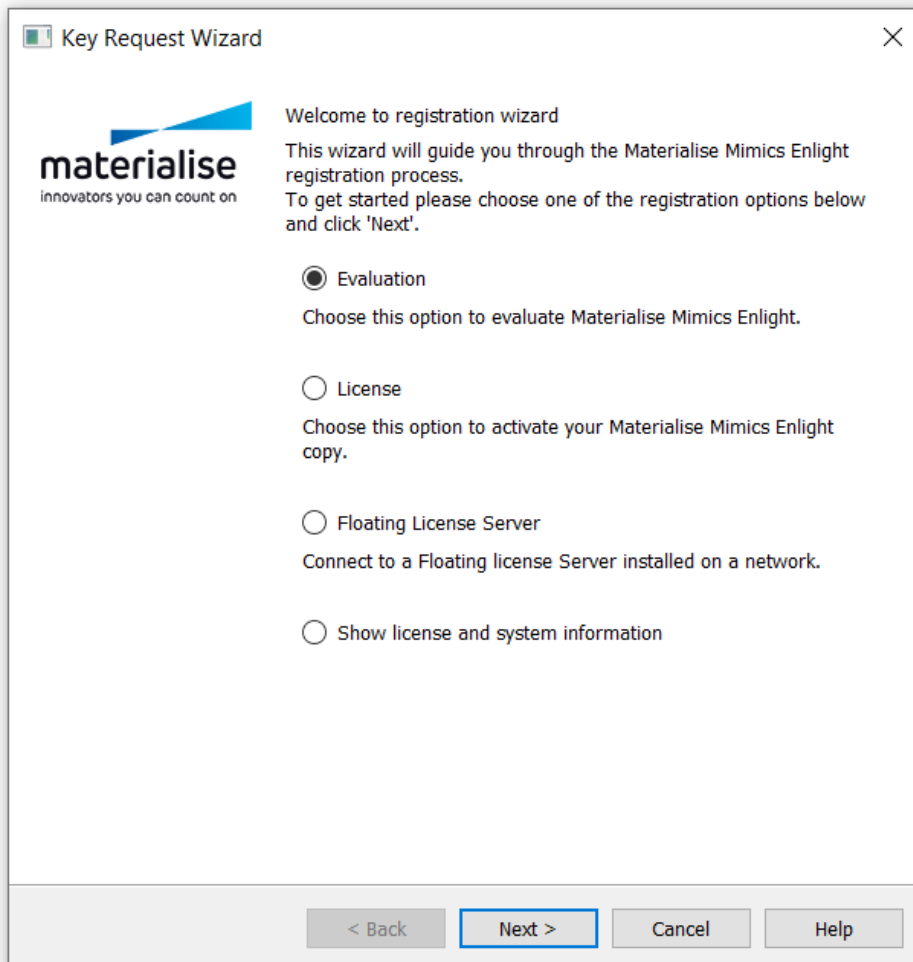


Click *Finish*.



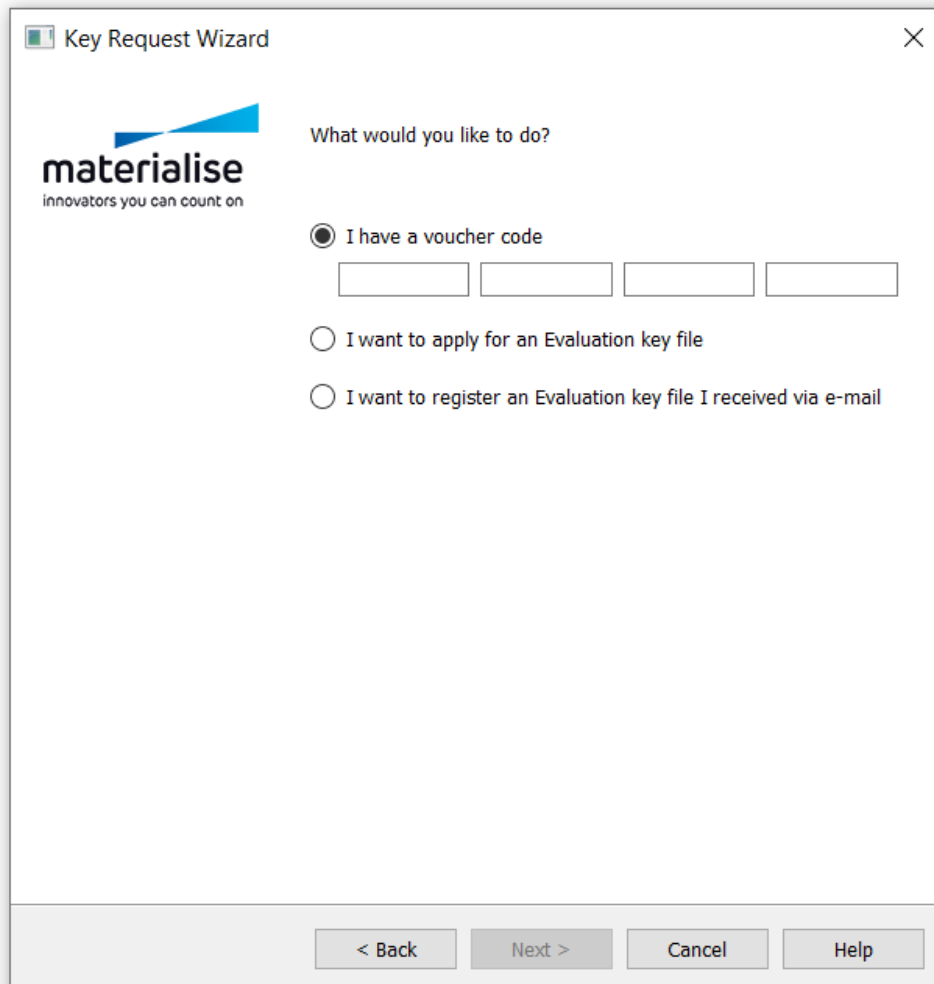
Open the Mimics Enlight software. The registration wizard will open. If not, you can find it under Help > Licenses.

Select *Evaluation* (click Next).



Select *I have a voucher code* and enter your personal license key. You can find this personal key in your acceptance email.

Can't find your acceptance email? Reach out to your Materialise contact person to have your key re-sent.

The image shows a 'Key Request Wizard' dialog box. On the left is the Materialise logo with the tagline 'innovators you can count on'. The main area is titled 'What would you like to do?'. There are three radio button options: 'I have a voucher code' (which is selected), 'I want to apply for an Evaluation key file', and 'I want to register an Evaluation key file I received via e-mail'. Below the first option are four empty text input boxes for entering the voucher code. At the bottom of the dialog are four buttons: '< Back', 'Next >', 'Cancel', and 'Help'.

Download the demo case and **save it on your desktop**.

Demo case

When you have finished this step, please let us know by clicking *I did it!*.

I did it!

Do you need support with the installation? Reach out to your Materialise contact person.